

## Bearing Damage and Countermeasures

### CREEP

Damage condition	Possible causes	Countermeasures
<p>Creep is a phenomenon in bearings where relative slipping occurs at the fitting surfaces and thereby creates a clearance at the fitting surface. Creep causes a shiny appearance, occasionally with scoring or wear.</p>	<ul style="list-style-type: none"> <li>• Insufficient interference or loose fit</li> <li>• Insufficient sleeve tightening</li> </ul>	<ul style="list-style-type: none"> <li>• Check the interference, and prevent rotation</li> <li>• Correct the sleeve tightening</li> <li>• Investigate the shaft and housing precision</li> <li>• Preload in the axial direction</li> <li>• Prevent axial movement of ring</li> <li>• Apply adhesive to the fitting surface</li> <li>• Apply a film of lubrication to the fitting surface</li> </ul>

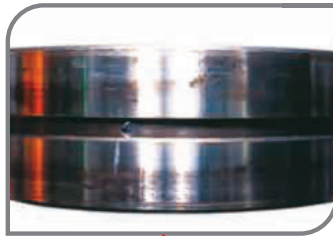


**CREEP**

**Part:** Inner ring of a spherical roller bearing

**Symptom:** Creep accompanied by scoring of bore surface

**Cause:** Insufficient interference



**CREEP**

**Part:** Outer ring of a spherical roller bearing

**Symptom:** Creep occurs over entire circumference of outside surface

**Cause:** Loose fit between outer ring and housing